

# JVC

**PROFESSIONAL**

## 42-INCH PLASMA DISPLAY MONITOR

# GD-V4210PCE

Flat Plasma Display Monitor Delivering Bright, High-Contrast Pictures with Wide Viewing Angle



- Superb Video Picture Quality
- 700:1 Contrast Ratio
- Super Bright Picture (350 cd/m<sup>2</sup>)
- 16.77 Million Colours/256 Levels
- Wide Viewing Angle (160 Degrees)

- Wall/Ceiling Mountable
- RS-232C Interface
- S-VGA/XGA Compatible
- Various Set-Up Capabilities



### ■ Colour Clarity

The new GD-V4210PCE assigns 256 values to each red, green, and blue component of each pixel to display over 16.77 million colours and utilises advanced technology to prevent orange light generation and ensure pure red, green, and blue emissions. These features, together with black-stripe processing of cell partitions and an exclusive JVC-developed filter, make possible colour reproduction with the clarity and fidelity of true photographic quality and generation of graphics with exceptionally rich tones.

### ■ Contrast Ratio — 700:1

The GD-V4210PCE comes with sophisticated circuitry that enhances its contrast ratio to 700:1. For the viewer, that means crystal clear, sharp pictures, which appear to leap out of the screen. Besides creating an eye-catching display, high contrast offers special advantages when displaying detailed tables of alphanumeric characters — such as a rail or airline schedule. Industrial production statistics or stock and currency exchange rate quotes. This type of information can be read instantly and easily.

### ■ Actual Brightness — 350 cd/m<sup>2</sup>

Brightness has also received a strong boost compared to conventional levels. Delivering bright pictures of 350 cd/m<sup>2</sup>, the GD-V4210PCE outperforms conventional models. Brighter images further extend the monitor's applications to outdoor use in strong sunlight and indoor locations where the ambient light level is unusually high.

### ■ Operational Versatility

To ensure long-term, reliable operation of the plasma display, JVC has added special display maintenance functions.

#### 1 Pixel shift

When turned on via the On-screen Display (OSD), the picture is periodically shifted by about one centimetre in each of the four diagonal directions. This diffuses the fatigue of the high-brightness portion of the picture to achieve a relative reduction of the fatigue.

#### 1 Refresh mode

When switched on via the OSD, a built-in signal generator generates a signal to give an all-white screen. The difference in the degree of pixel fatigue is equalised by displaying an all-white picture on the entire screen.

#### 1 Colour reverse

When switched on via the OSD, complementary colours for the input video colours are displayed in a similar manner to the negative-positive reversal. For example, if blue (B) colour signal is fed, a supplemental colour (yellow = R+G) is displayed as Reverse Colour. This is designed to equalise the total degree of pixel fatigue. Even when text information or still images are displayed for long periods of time, pixel fatigue is greatly reduced. Similar to the Refresh Mode, the total degree of pixel fatigue is equalised by adding complementary colours to each pixel.

### ■ XGA Compression

The GD-V4210PCE is XGA compatible for high-resolution graphics. And, because XGA is a non-interlaced signal, users of the GD-V4210PCE enjoy the added benefit of a flicker-free display.

### ■ Flexible and Easy Adjustment

JVC has provided its plasma display with an array of unique functions that support a wide range of applications. An on-screen menu makes it easy for the user to choose the best settings for a particular operating environment. The colour temperature can be pre-set at two selective values: 6500°K (LOW) and 9300°K (HIGH). The user can also adjust the colour temperature within the range between 3000°K and 10000°K, especially beneficial in broadcast studio environments which utilise live plasma displays within their set design. For example, setting the GD-V4210PCE to 3200°K allows studio cameras shooting with 3200°K filters to faithfully reproduce the vivid range of colours our plasma display is capable of displaying. Picture size and position are individually adjustable in both directions (vertical and horizontal) to match the video signal input. For High Definition signal input, which is becoming increasingly popular, the picture size can be pre-set for two types of signal: 1035i and 1080i.

### ■ Powerful Features from Plasma Technology

The GV-V4210PCE has important features only a plasma display can deliver.

- 1 Flat display eliminates distortion, and with a viewing angle of 160° from any direction, images can be clearly seen from almost anywhere in a room.
- 1 Flicker-free display, this non-interlace system uses every scanning line of the display, unlike a CRT, which uses every other line. The benefits are virtually zero eye fatigue, even when viewing the monitor for long periods.
- 1 Immune to electromagnetic fields, the plasma display is not affected by the noise that affects conventional monitors, and so can be used for a wide range of applications.

Together, these key features open up a wide range of demanding assignments in environments where other monitors cannot operate successfully.

### ■ Remote Control Unit

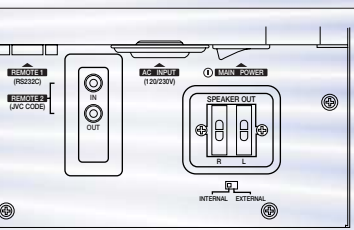
An infra-red remote control unit is supplied as standard.

### ■ Bezel Colour Choice

The GD-V4210PCE is available with either Silver or Dark Grey coloured Bezel (frame) to suite a wide range of applications and installation sites.

### ■ GD-V4211PCE

The GD-V4211PCE is an EMC Class B compatible model and is ideal for use in demanding environments including personal or home cinema use.



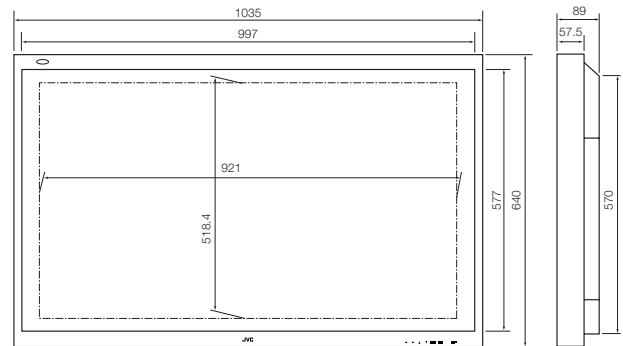
Simulated picture

## Specifications

<b>■ DISPLAY PANEL</b>	
Screen size (W x H)	921 x 518.4 mm (wide 42-inch diagonal)
Aspect ratio	16:9 wide (width-to-height ratio of screen) 4:3/16:9 selectable
Viewing angle	160°
Display colours	16,777,216 colours (RGB each of 256 levels)
Brightness	350 cd/m <sup>2</sup>
Resolution (H x V)	640 x 480 (4:3) 853 x 480 (16:9) S-VGA: 800 x 600 (Displayed at 640 x 480) XGA: 1024 x 768 (Displayed at 640 x 480)
No. of pixels	Horizontal 853 x Vertical 480 pixels
Display modes	
Regular (4:3)	4:3 video image displayed in centre of screen
Full/Panoramic (16:9)	Displays wide horizontal expansion of 4:3 VGA video image for full-screen display
Zoom (16:9)	Overall expansion of 4:3 video image for full-screen display (top and bottom of image are cut)
Input connectors	
RGB A	D-Sub 15-pin (3-row) x 1 Video signal: 0.7 V(p-p) Sync signal: 1.0 V — 5.0 V(p-p), high impedance
RGB B	BNC x 10, 5 for bridged output R: 0.7 V(p-p), 75 ohms G: 0.7 V(p-p), 75 ohms, Sync. On G: 1.0 V(p-p) B: 0.7 V(p-p), 75 ohms HD/CS: 1.0 V — 5.0 V(p-p), high impedance VD: 1.0 V — 5.0 V(p-p), high impedance PC: RCA pin x 2 (L/R), 500 mVrms
Audio input	RCA pin x 2 (L/R), output impedance 600 ohms
Audio outputs	Internal: 2 W + 2 W (TYP at impedance 8 ohms) External: 3 W + 3 W (TYP at impedance 6 ohms)
Audio power output	Horizontal: 15.625 kHz to 56.48 kHz Vertical: 50 Hz to 75 Hz
Display frequency	Control signal terminal
Weight	RS-232C D-Sub 9-pin x 1 (female) 35.8 kg
<b>■ GENERAL</b>	
Power requirement	120V AC/230V AC, 50/60Hz
Power consumption	3.5A (120V AC)/1.9A (230V AC)
Operating environment conditions	
Temperature range	0°C to +40°C (32°F to 104°F)
Humidity range	20% to 90%, non condensation

## Dimensions

Unit: mm



## Speaker System (Option)



### Slim Side-Mounted Speaker System

<b>Specifications</b>	
Rated input	8 W
Nominal impedance	6 ohms
Dimensions	100 (W) x 610 (H) x 89 (D) mm
Weight	2.1 kg (each)
Operating conditions	Temperature: 0° to 40°C Humidity: 20% to 80%, no condensation

## Optional Accessories

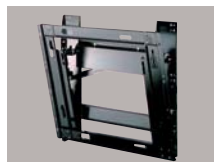


**TS-C420P4W**

**Stand Unit (Vertical Position)**  
Dimensions (W x H x D):  
500 x 607.2 x 700 mm



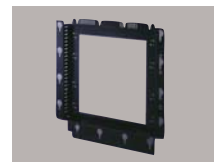
**Stand Unit (Horizontal Position)**  
Dimensions (W x H x D):  
700 x 384.6 x 452 mm



**TS-C420P2W Wall Mounting Unit**  
Mounting Angle: 0°, 5°, 10°, 15°  
Dimensions (W x H x D):  
494 x 529 x 47 mm\*



**TS-C420P3W Ceiling Suspension Unit**  
Mounting Angle: 0°, 10°, 20°  
Dimensions (W x H x D):  
570 x 450 x 165 mm\*



**TS-C420P6W Wall Mounting Unit**  
Mounting Angle: 0°  
Dimensions (W x H x D):  
570 x 576 x 47 mm\*



**TS-C420P7W Stand Unit**  
Dimensions (W x H x D):  
574 x 226 x 330 mm\*

\*At the mounting angle 0°.

### Caution:

■ PDP is an ultra modern electronic device fabricated using leading-edge technology. Therefore, its effective picture elements are 99.99 percent or more, meaning 0.01 percent or less defective elements or "always ON" portion could exist. ■ Screen burn-in: Like a CRT, PDP uses phosphor; therefore, burn-in could result from long-term use such as displaying the same still picture.

*Design and specifications subject to change without notice.*

# JVC

DISTRIBUTED BY

VICTOR COMPANY OF JAPAN, LIMITED